

# City of Reno Storm Water Illegal Discharge Detection and Elimination Program

City of Reno Stormwater Outfall Investigation:

City of Reno Truckee River Outfalls From West  
McCarran Blvd. to East McCarran Blvd.

## Table of Contents:

<b>SECTION 1</b>	.....Overview and Inclusive Map
<b>SECTION 2</b>	.....Individual Map Sections With Associated Outfall Information
<b>SECTION 3</b>	.....Sampling Map, Overview and Results

## Overview

The length of Truckee River from McCarran Boulevard West to McCarran Boulevard East was walked in the month of August to detect illegal discharges. Since there was no composite list of all outflows to the Truckee River along this stretch within the City of Reno, each outflow detected was mapped and photographed to aid in coordinating detection efforts in the future.

A map of the entire stretch of Truckee River covered was printed out and broken into sections so that smaller maps of sections of the river could be used in the future to locate each individual outfall. These sections are numbered from 10 through 26 with section 26 representing the West McCarran limit and section 10 representing the East McCarran limit. These numbers were selected to allow for expansion in the future if necessary. Each outfall was then given a letter designator to identify each outfall within each map section.

A digital photo was taken of each outfall and information related to the outfall recorded. The digital photos were converted to a format compatible with the "ArcView GIS" software so that all information collected can be integrated with the map sections.

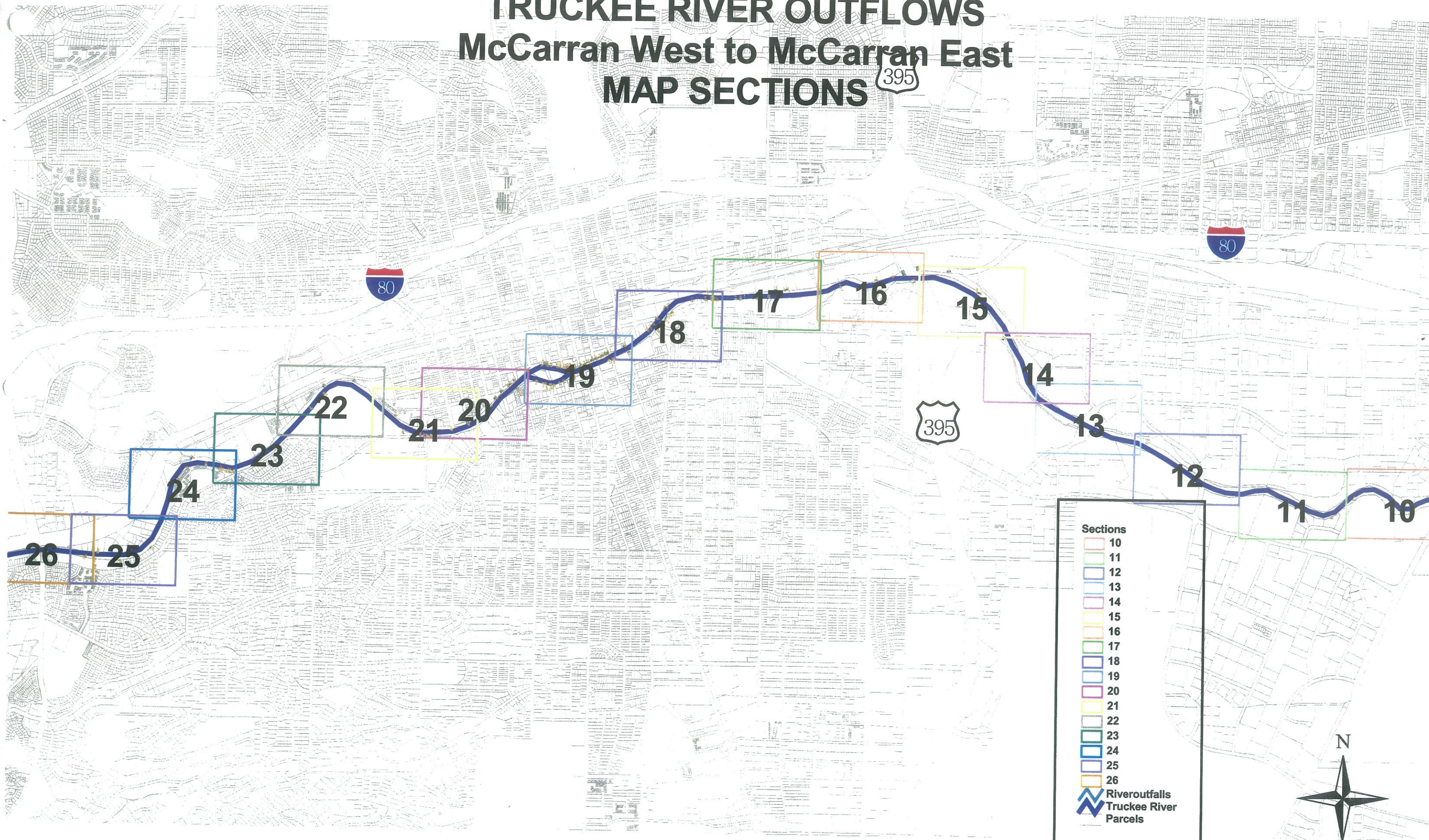
The data and samples collected for this project was acquired by Environmental Control Technician Alan Hart. Since the current storm water maps for the City of Reno are incomplete, Engineering Technician Jeanine Barnes of the Sanitary Engineering Department was asked to walk the Truckee River with Mr. Hart to compile GIS information and determine whether any changes should be made to the current City of Reno storm water maps. Ms. Barnes linked all of the information contained in this binder together in "ArcView GIS" and printed out all maps and individual outfall information sheets.

The eight major storm water outfalls to the Truckee River contained in the City of Reno were selected to be sampled for illegal discharge and are covered in section 3 of this binder.

A Notice of violation was written after it was discovered during this biannual river walk that a dust retardant was being applied to an area that contained a storm drain manhole and could possibly reach the Truckee River. NDEP was notified of this violation.

A cloudy discharge to the Truckee River was observed at outflow D16 and was traced back to the general vicinity of a Reno based cement operation. No Notice of Violation was issued to the cement operation since the source of the cloudy discharge could not be positively identified. The maintenance practices of the cement operation were voluntarily changed by the cement operation to limit the amount of cement related material that could be washed into the storm drain in the future.

# City of Reno TRUCKEE RIVER OUTFLOWS McCarran West to McCarran East MAP SECTIONS





## Outfall # A10



**SIZE** 48"  
**FLOW** N  
**DATE** 8/8/2002  
**BANK** S  
**OPEN** Y  
**PHOTO#** 224, 100  
**FLAPPER** Y

City of Reno  
TRUCKEE RIVER OUTFLOWS  
McCarran West to McCarran East



10

445 CONEY ISLAND DR

A10

Greg Left  
Marieta Way  
Left Coney Island  
Dr. Park at  
445 Coney Island  
Dr.



## Outfall # A11



**SIZE**        **8"**  
**FLOW**       **N**  
**DATE**       **8/8/2002**  
**BANK**       **S**  
**OPEN**       **Y**  
**PHOTO#**    **226**  
**FLAPPER**

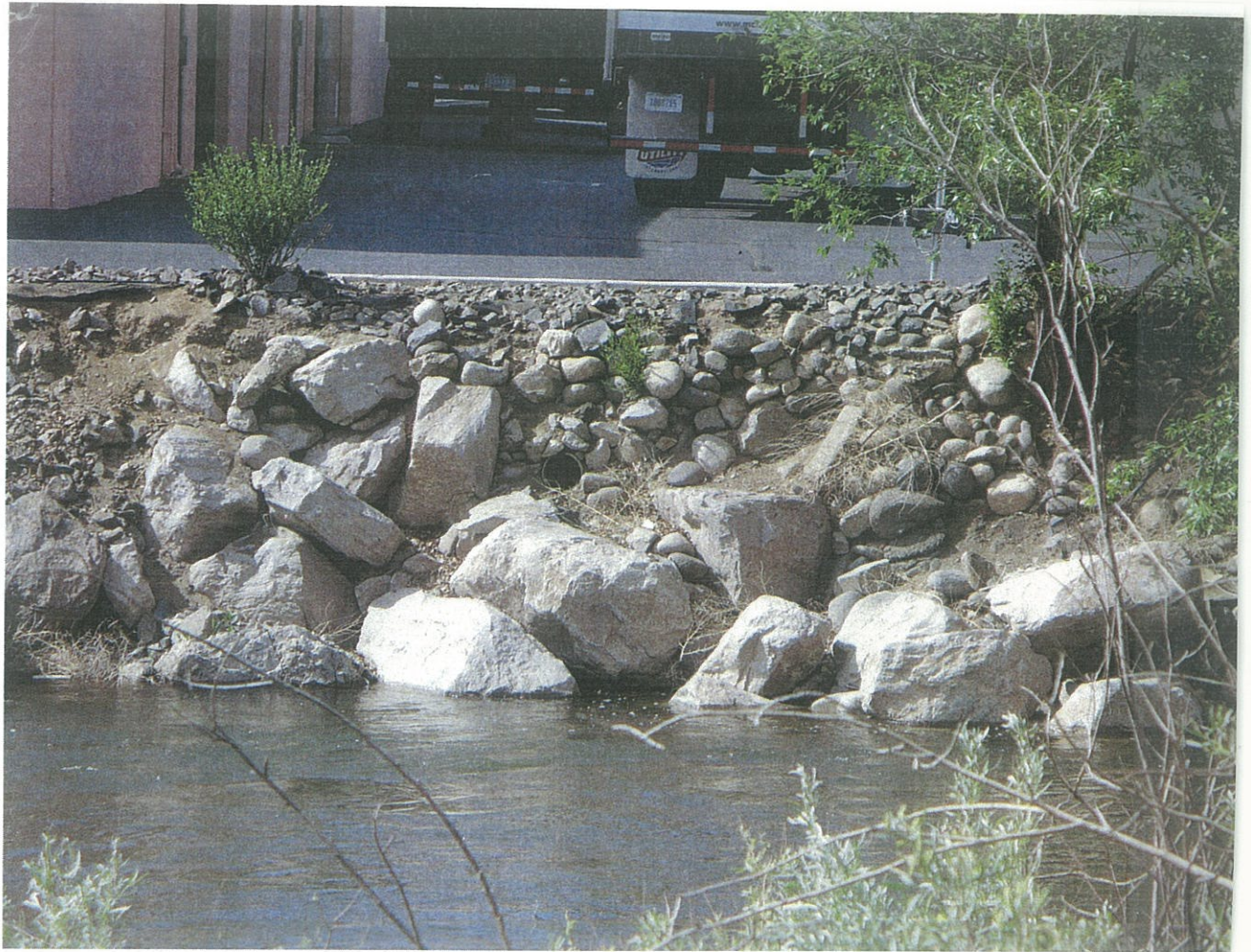


## Outfall # B11



<b>SIZE</b>	<b>Ditch</b>
<b>FLOW</b>	<b>Y</b>
<b>DATE</b>	<b>8/8/2002</b>
<b>BANK</b>	<b>S</b>
<b>OPEN</b>	<b>Y</b>
<b>PHOTO#</b>	<b>229</b>
<b>FLAPPER</b>	

C11





11

A10

A11

B11

D11

CH

**No Outfalls in This Section**

12

Rock Blvd



A13



Outfall # B13



C 13



13

R13 A2  
08-018

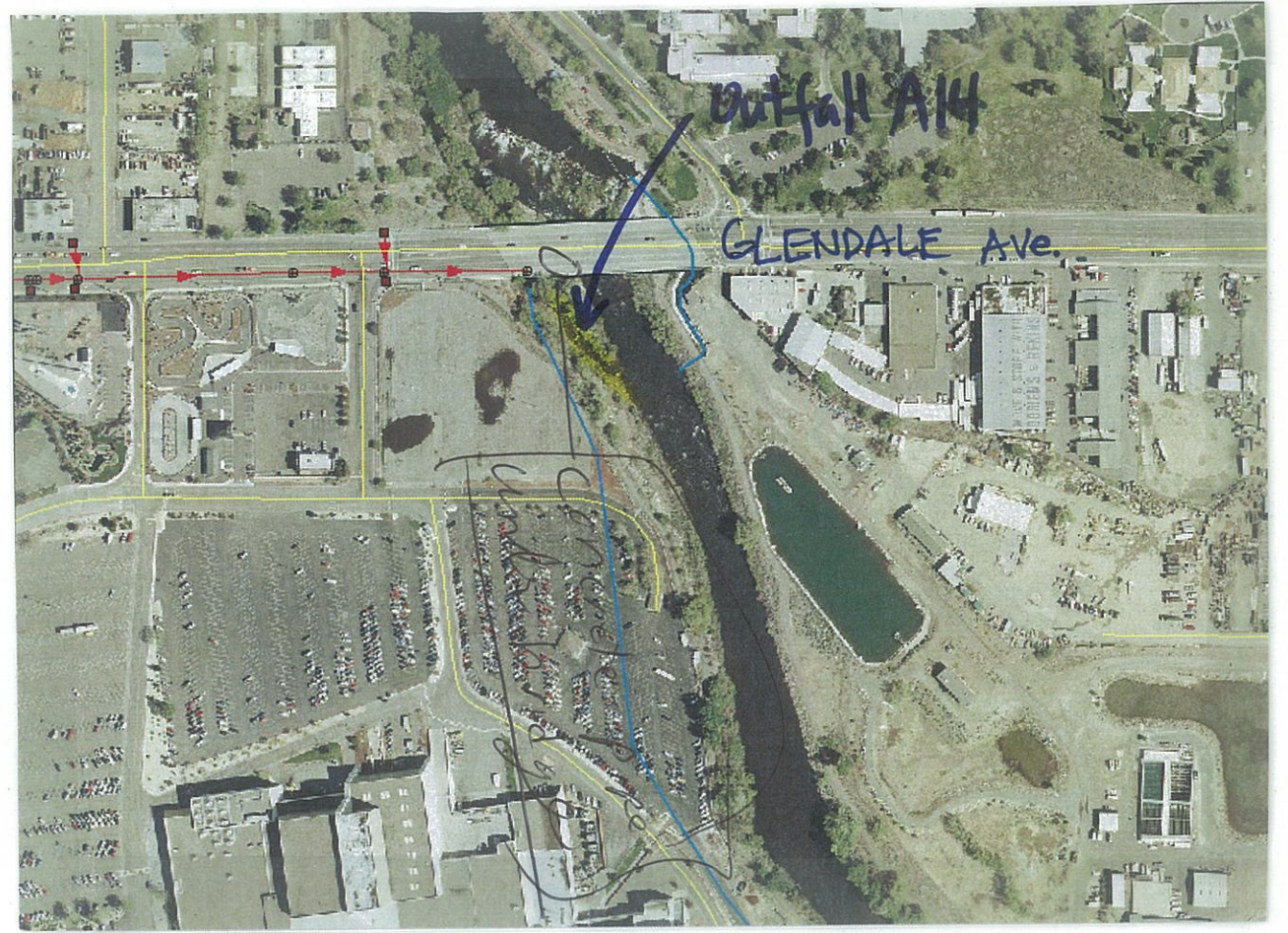
A13

C13

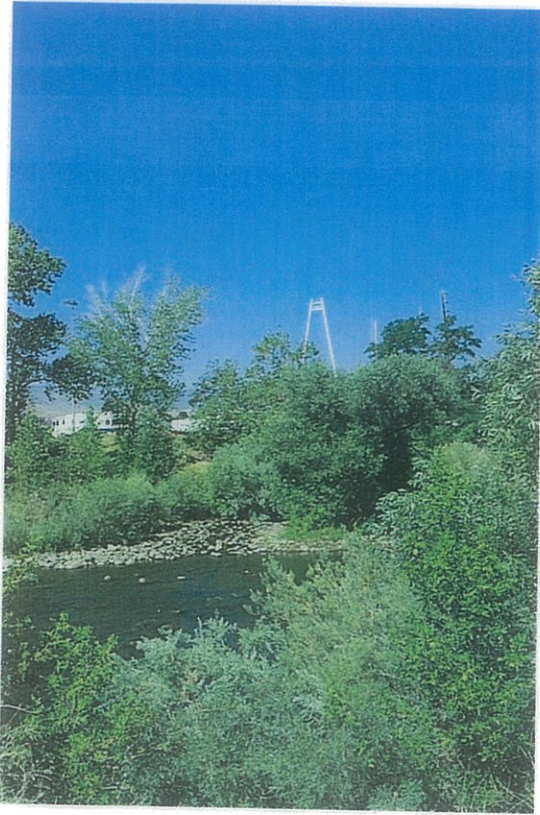
GREG ST

B13





## Outfall # A14



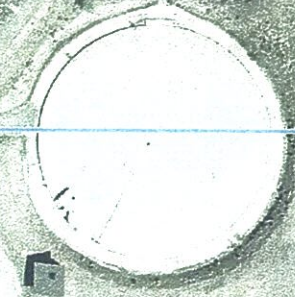
SIZE ?  
FLOW ?  
DATE 8/9/2002  
BANK S  
OPEN ?  
PHOTO# 271  
FLAPPER ?



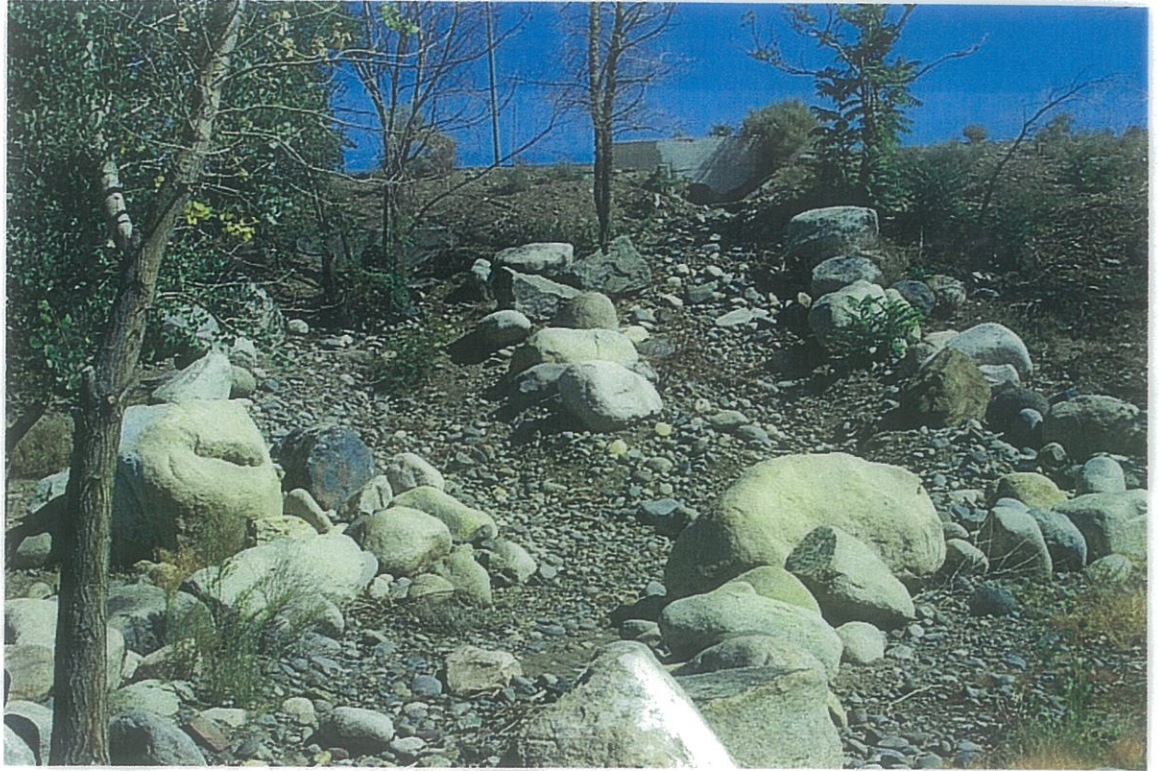
14

A14

MOVE & STORE WITH  
OBRIEN'S & BEKINS



## Outfall # A15



**SIZE**           **30"**  
**FLOW**           **N**  
**DATE**           **8/9/2002**  
**BANK**           **S**  
**OPEN**           **Y**  
**PHOTO#**       **260**  
**FLAPPER**

## Outfall # B15



**SIZE**        **18"**  
**FLOW**        **N**  
**DATE**        **8/9/2002**  
**BANK**        **S**  
**OPEN**        **Y**  
**PHOTO#**     **264**  
**FLAPPER**

## Outfall # C15



SIZE	48"
FLOW	Y
DATE	8/9/2002
BANK	S
OPEN	Y
PHOTO#	267
FLAPPER	Y



15

F16

E16

A15

B15

C15

A14

## Outfall # A16



SIZE	48"
FLOW	N
DATE	8/9/2002
BANK	S
OPEN	Y
PHOTO#	392
FLAPPER	Y

**B16**



# Outfall # B16



SIZE 18"  
FLOW N  
DATE 8/9/2002  
BANK N  
OPEN Y  
PHOTO# 398  
FLAPPER

## Outfall # C16



SIZE 4"  
FLOW N  
DATE 8/9/2002  
BANK N  
OPEN Y  
PHOTO# 242  
FLAPPER

## Outfall # D16



SIZE        48"  
FLOW        Y  
DATE        8/9/2002  
BANK        N  
OPEN        Y  
PHOTO#     248  
FLAPPER

## Outfall # E16



SIZE

FLOW

DATE **8/9/2002**

BANK **S**

OPEN

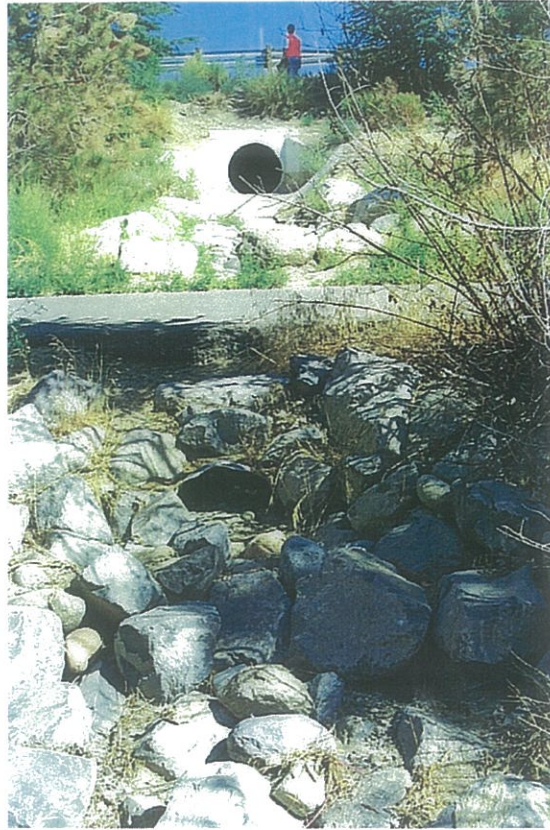
PHOTO# **254**

FLAPPER

City of Reno  
TRUCKEE RIVER OUTFLOWS  
McCarran West to McCarran East



## Outfall # F16



**SIZE**            **36"**

**FLOW**           **N**

**DATE**            **8/9/2002**

**BANK**            **N**

**OPEN**            **Y**

**PHOTO#**        **258**

**FLAPPER**

16

CORP YARD

A16

B16

C16

D16

F16

RIETZKE

HUNYER

CONYER



# Outfall # A17



**SIZE** 24"X36"  
**FLOW** N  
**DATE** 8/16/2002  
**BANK** S  
**OPEN** Y  
**PHOTO#** 373  
**FLAPPER**



# Outfall # B17



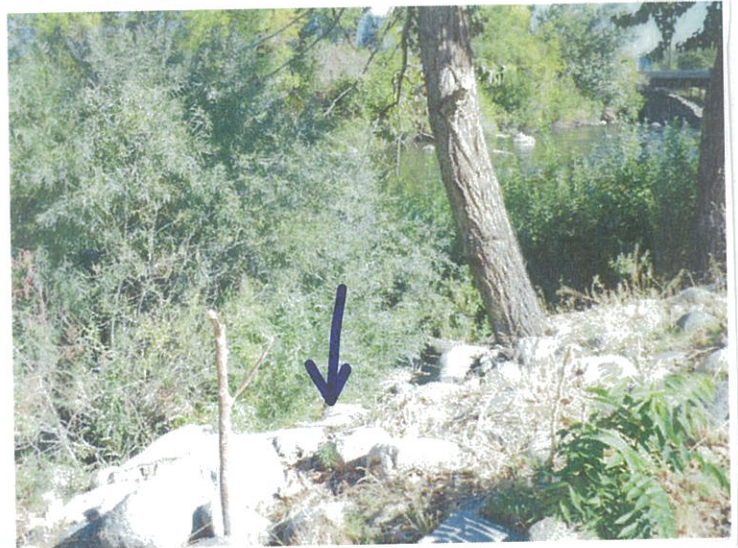
SIZE 36"  
FLOW Y  
DATE 8/16/2002  
BANK S  
OPEN Y  
PHOTO# 374  
FLAPPER



# Outfall # C17



SIZE 10"  
FLOW N  
DATE 8/16/2002  
BANK S  
OPEN N  
PHOTO# 379  
FLAPPER



## Outfall # D17



SIZE 18"  
FLOW N  
DATE 8/16/2002  
BANK S  
OPEN Y  
PHOTO# 382  
FLAPPER

## Outfall # E17



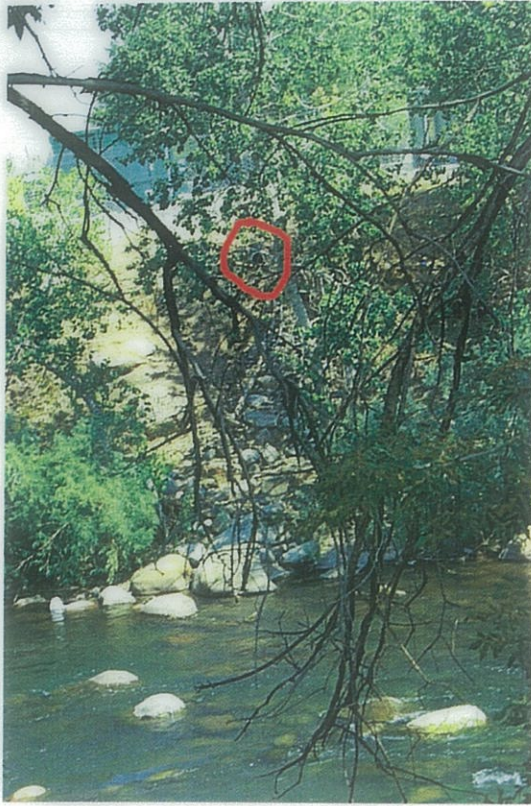
**SIZE**            **24"**  
**FLOW**           **N**  
**DATE**            **8/16/2002**  
**BANK**            **N**  
**OPEN**            **Y**  
**PHOTO#**        **386**  
**FLAPPER**

## Outfall # F17

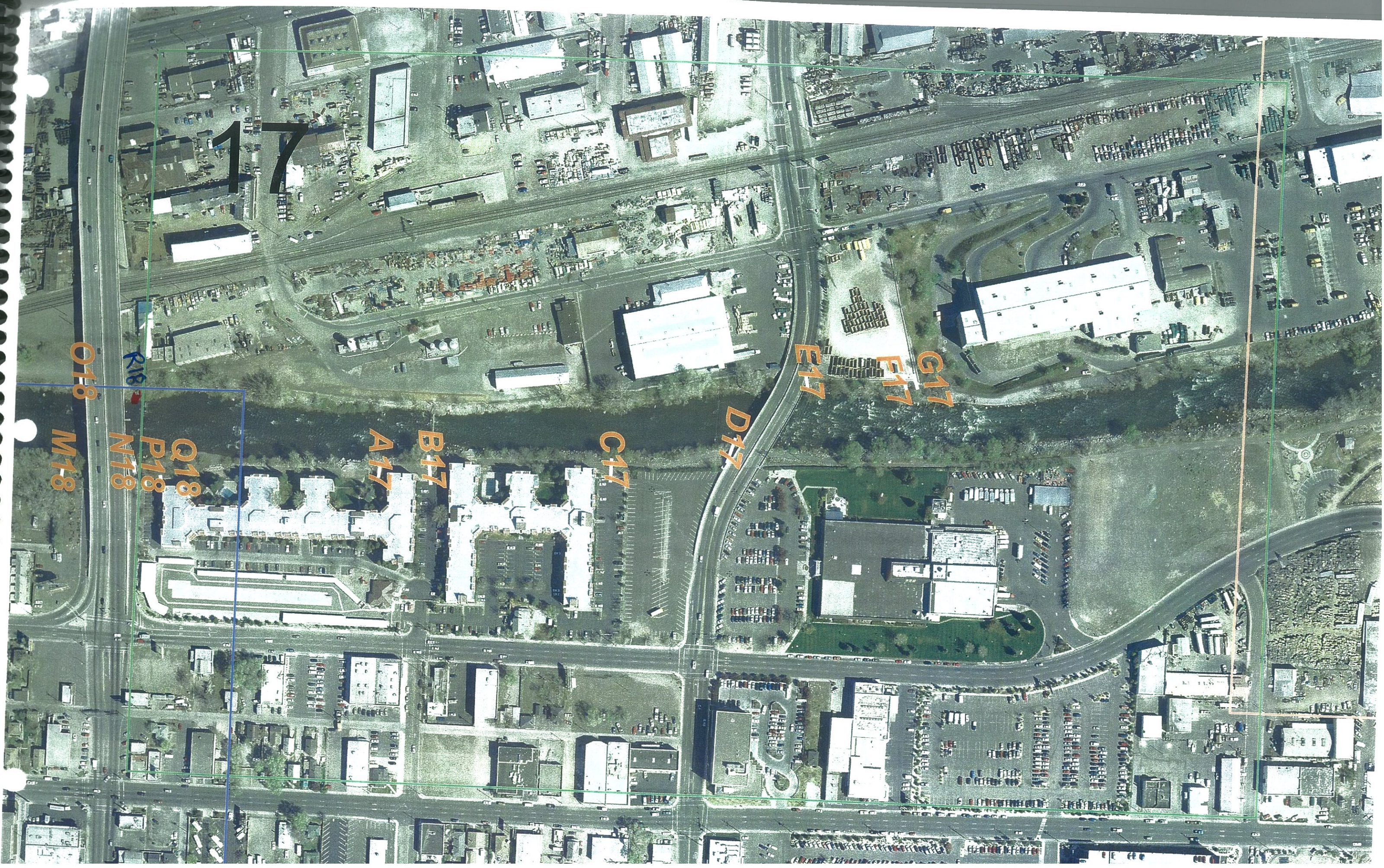


**SIZE** 10"  
**FLOW** N  
**DATE** 8/16/2002  
**BANK** N  
**OPEN** Y  
**PHOTO#** 387  
**FLAPPER**

## Outfall # G17



**SIZE**        **10"**  
**FLOW**        **N**  
**DATE**        **8/16/2002**  
**BANK**        **N**  
**OPEN**        **Y**  
**PHOTO#**     **389**  
**FLAPPER**



O18

M18

R18

N18

P18

Q18

A17

B17

C17

D17

E17

F17

G17

## Outfall # A18

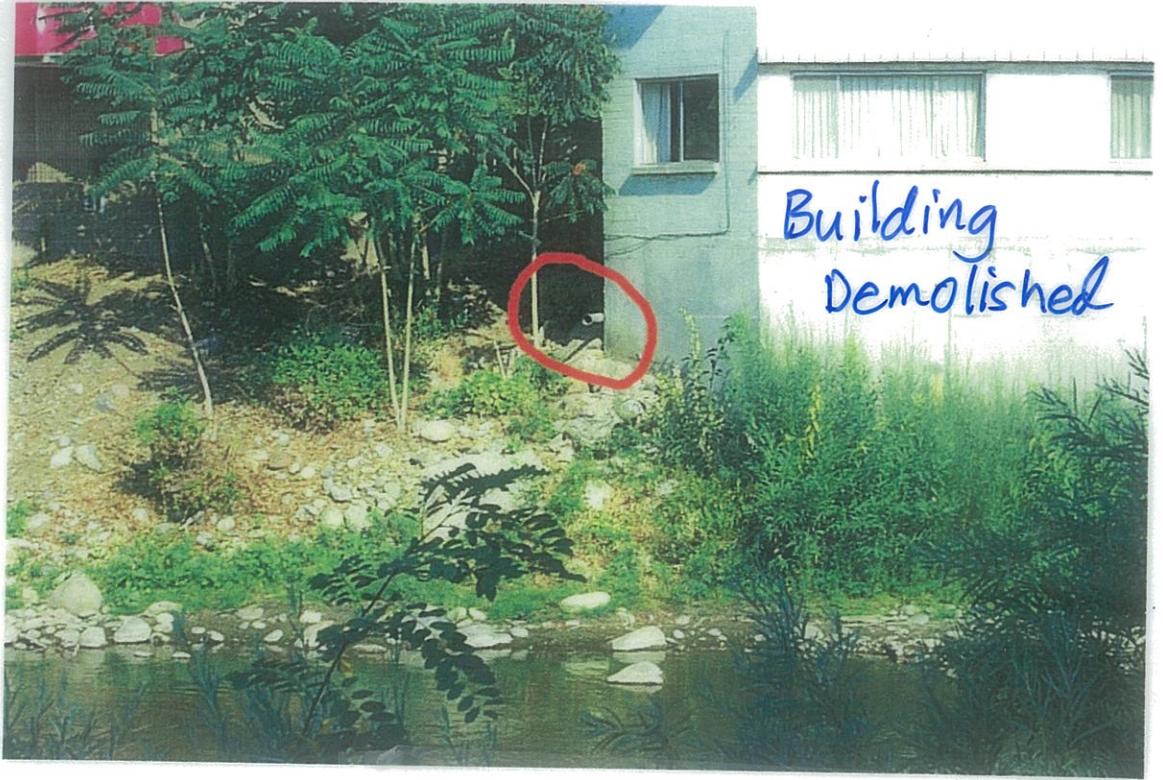


SIZE        24"  
FLOW  
DATE        8/16/2002  
BANK        S  
OPEN  
PHOTO#     317  
FLAPPER

City of Reno  
TRUCKEE RIVER OUTFLOWS  
McCarran West to McCarran East



# Outfall # B18



SIZE 6"  
FLOW N  
DATE 8/16/2002  
BANK N  
OPEN  
PHOTO# 319  
FLAPPER



# C18

Building was demolished.



Photo taken from the river side.  
Aces Ballpark in the background



Photo taken from "inside" of demolished building.

Out of Commission.  
See photos on left.

## Outfall # C18



SIZE 4"  
FLOW N  
DATE 8/16/2002  
BANK N  
OPEN  
PHOTO# 321  
FLAPPER

## Outfall # D18



SIZE 6"  
FLOW N  
DATE 8/16/2002  
BANK N  
OPEN  
PHOTO# 322  
FLAPPER

E18B



Replaced by E18B

Outfall # E18

*Mc Carran*



SIZE 3"  
FLOW N  
DATE 8/16/2002  
BANK S  
OPEN  
PHOTO# 326  
FLAPPER

*Mc Carran*



## Outfall # F18



**SIZE**        **48"**  
**FLOW**        **Y**  
**DATE**        **8/16/2002**  
**BANK**        **N**  
**OPEN**  
**PHOTO#**     **328**  
**FLAPPER**

## Outfall # G18



SIZE        12"  
FLOW        N  
DATE        8/16/2002  
BANK        S  
OPEN  
PHOTO#     330  
FLAPPER

City of Reno  
TRUCKEE RIVER OUTFLOWS  
McCarran West to McCarran East





H18

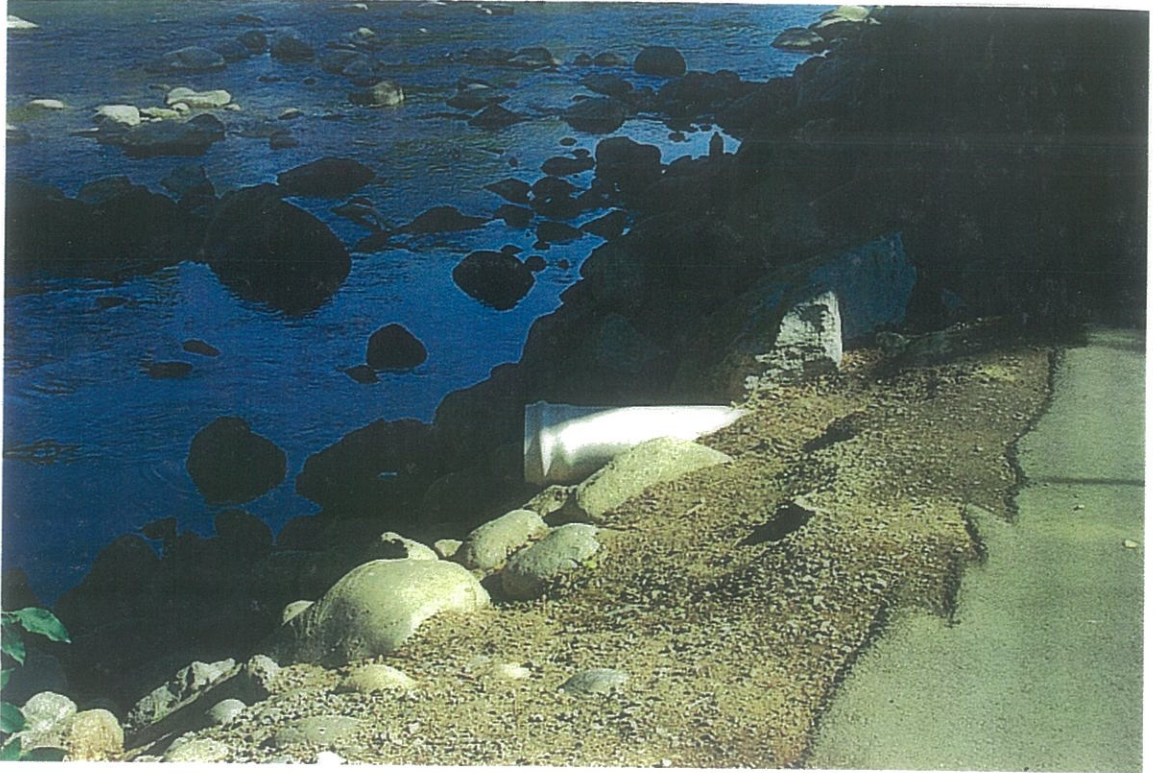
I18



H18

I18

## Outfall # H18



**SIZE**        **12"**  
**FLOW**       **N**  
**DATE**       **8/16/2002**  
**BANK**       **S**  
**OPEN**  
**PHOTO#**    **333**  
**FLAPPER**

City of Reno  
TRUCKEE RIVER OUTFLOWS  
McCarran West to McCarran East

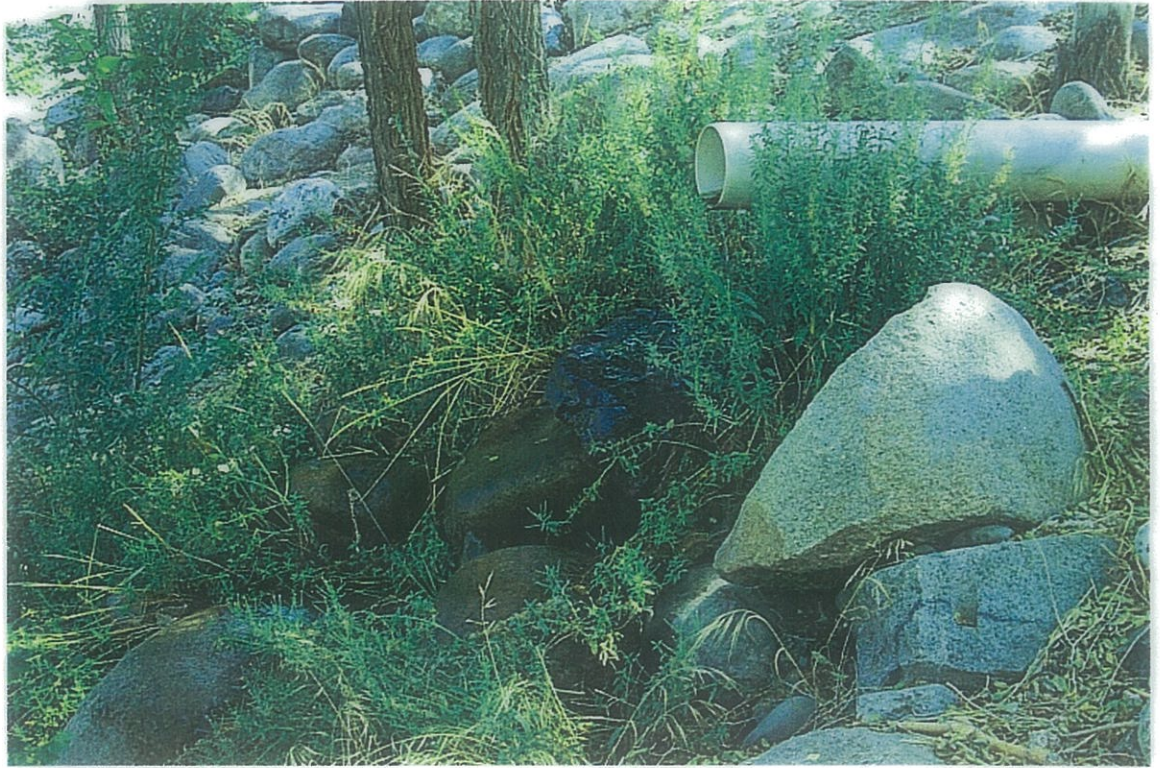


## Outfall # I18



**SIZE**        **12"**  
**FLOW**        **Y**  
**DATE**        **8/16/2002**  
**BANK**        **S**  
**OPEN**  
**PHOTO#**    **338**  
**FLAPPER**    **Y**

## Outfall # J18



**SIZE**            **12"**

**FLOW**           **Y**

**DATE**           **8/16/2002**

**BANK**           **S**

**OPEN**

**PHOTO#**       **344**

**FLAPPER**

**K18B**

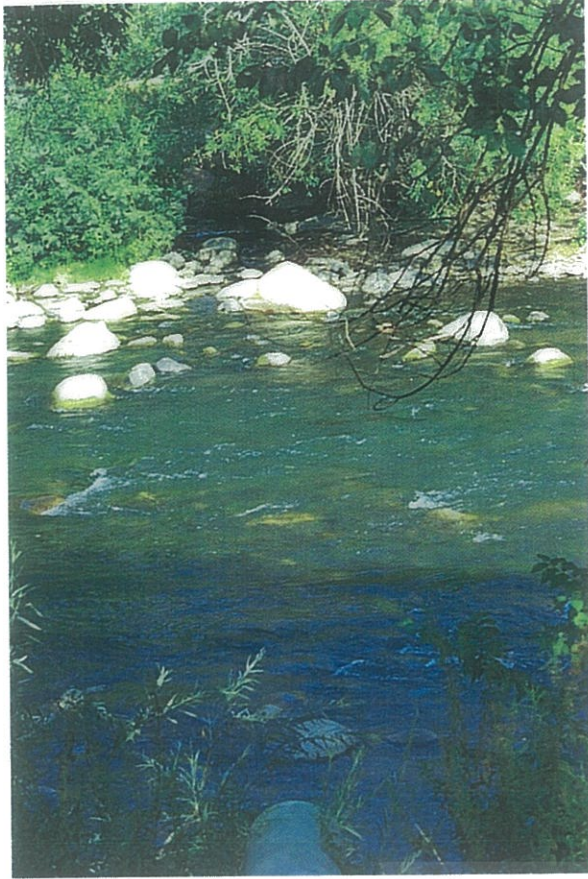
New (2009) – Aces Ballpark

24"

Flapper (Red)



# Outfall # K18



SIZE  
FLOW  
DATE 8/16/2002  
BANK N  
OPEN  
PHOTO# 343  
FLAPPER



# Outfall # L18

*No photo*

## NO PHOTO

SIZE 3"  
FLOW N  
DATE 8/16/2002  
BANK S  
OPEN  
PHOTO# 0  
FLAPPER



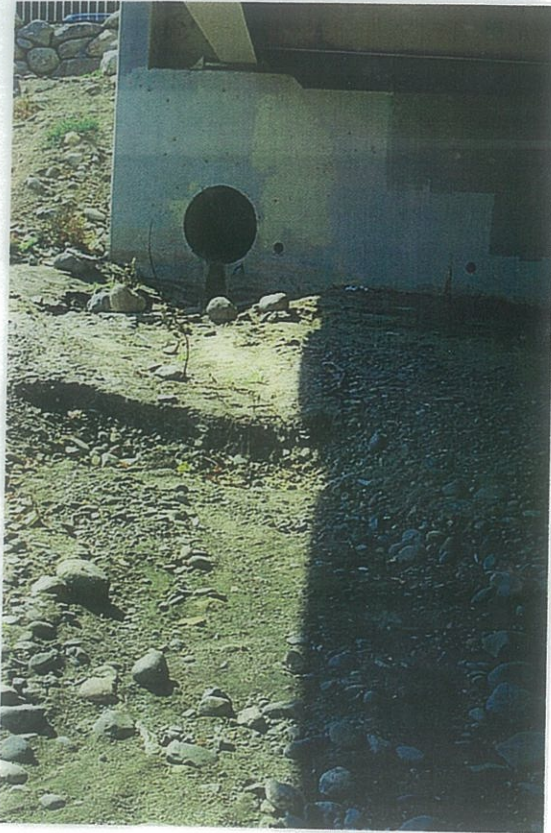
# Outfall # M18

M18



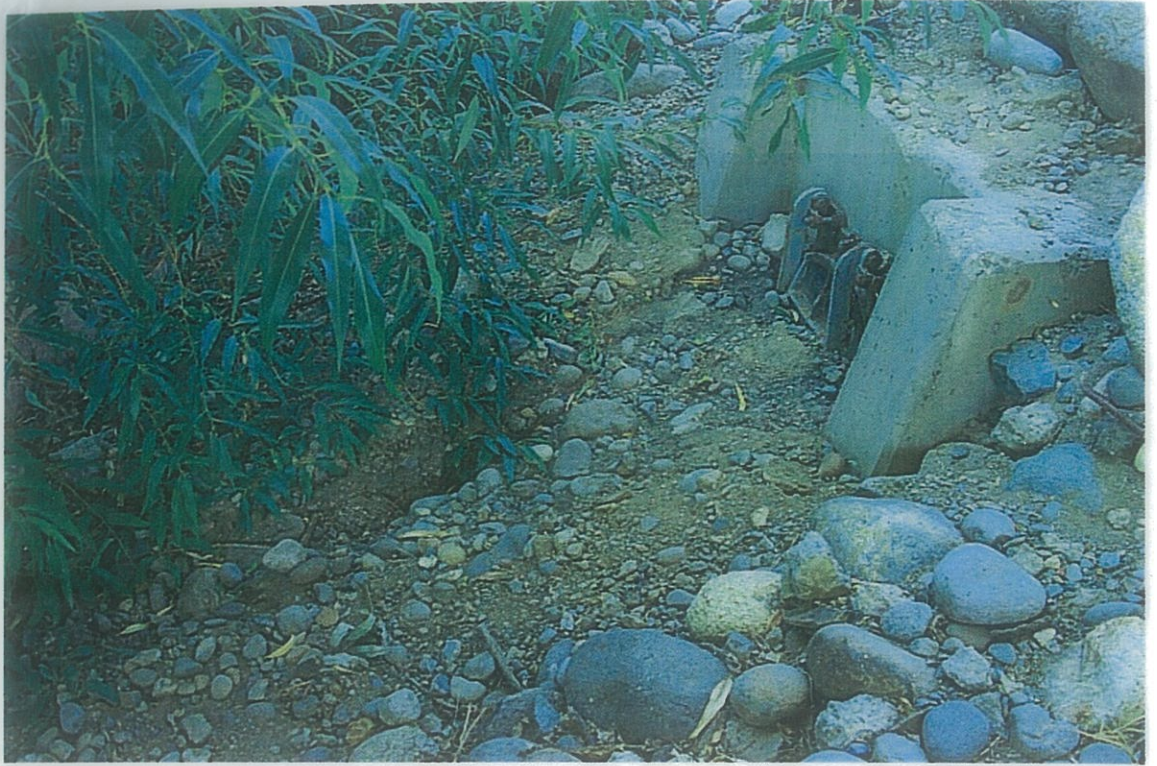
SIZE 3"  
FLOW N  
DATE 8/16/2002  
BANK S  
OPEN  
PHOTO# 0  
FLAPPER

## Outfall # N18



**SIZE**        **30"**  
**FLOW**        **N**  
**DATE**        **8/16/2002**  
**BANK**        **S**  
**OPEN**  
**PHOTO#**     **360**  
**FLAPPER**

## Outfall # O18



**SIZE**           **36"**  
**FLOW**           **N**  
**DATE**           **8/16/2002**  
**BANK**           **N**  
**OPEN**           **N**  
**PHOTO#**       **364**  
**FLAPPER**      **Y**

## Outfall # P18



**SIZE**           **12"**  
**FLOW**           **N**  
**DATE**           **8/16/2002**  
**BANK**           **S**  
**OPEN**  
**PHOTO#**       **369**  
**FLAPPER**

City of Reno  
TRUCKEE RIVER OUTFLOWS  
McCarran West to McCarran East



## Outfall # Q18



SIZE 4"  
FLOW N  
DATE 8/16/2002  
BANK S  
OPEN  
PHOTO# 371  
FLAPPER

R18



@ Wells Ave, north bank

18

Aces  
Ballpark

KUENZLI

Wells Ave

2nd St



# City of Reno Storm Water Illegal Discharge Detection and Elimination Program

City of Reno Stormwater Outfall Investigation:

City of Reno Truckee River Outfalls From West  
McCarran Blvd. to East McCarran Blvd.

SECTION TWO

# Outfall # A19



**SIZE** 8"  
**FLOW** N  
**DATE** 8/12/2002  
**BANK** S  
**OPEN**  
**PHOTO#** 275  
**FLAPPER**

City of Reno  
TRUCKEE RIVER OUTFLOWS  
McCarran West to McCarran East



## Outfall # B19



**SIZE**        **10"**  
**FLOW**        **N**  
**DATE**        **8/12/2002**  
**BANK**        **S**  
**OPEN**  
**PHOTO#**     **276**  
**FLAPPER**

## Outfall # B19B



**SIZE**            **10"**  
**FLOW**           **N**  
**DATE**            **8/12/2002**  
**BANK**            **S**  
**OPEN**  
**PHOTO#**        **276**  
**FLAPPER**

# Outfall # B19C



**SIZE**           **8**  
**FLOW**          **N**  
**DATE**          **8/8/2002**  
**BANK**          **S**  
**OPEN**  
**PHOTO#**       **505**  
**FLAPPER**

City of Reno  
TRUCKEE RIVER OUTFLOWS  
McCarran West to McCarran East



## Outfall # C19



**SIZE**            **10"**  
**FLOW**           **Y**  
**DATE**           **8/12/2002**  
**BANK**           **N**  
**OPEN**  
**PHOTO#**       **274**  
**FLAPPER**

City of Reno  
TRUCKEE RIVER OUTFLOWS  
McCarran West to McCarran East



## Outfall # D19



**SIZE**        **4' x 10'**

**FLOW**        **Y**

**DATE**        **8/12/2002**

**BANK**        **N**

**OPEN**

**PHOTO#**    **277**

**FLAPPER**

City of Reno  
TRUCKEE RIVER OUTFLOWS  
McCarran West to McCarran East



## Outfall # E19



**SIZE**        **3' x 6'**

**FLOW**       **N**

**DATE**        **8/12/2002**

**BANK**        **N**

**OPEN**

**PHOTO#**    **278**

**FLAPPER**

City of Reno  
TRUCKEE RIVER OUTFLOWS  
McCarran West to McCarran East

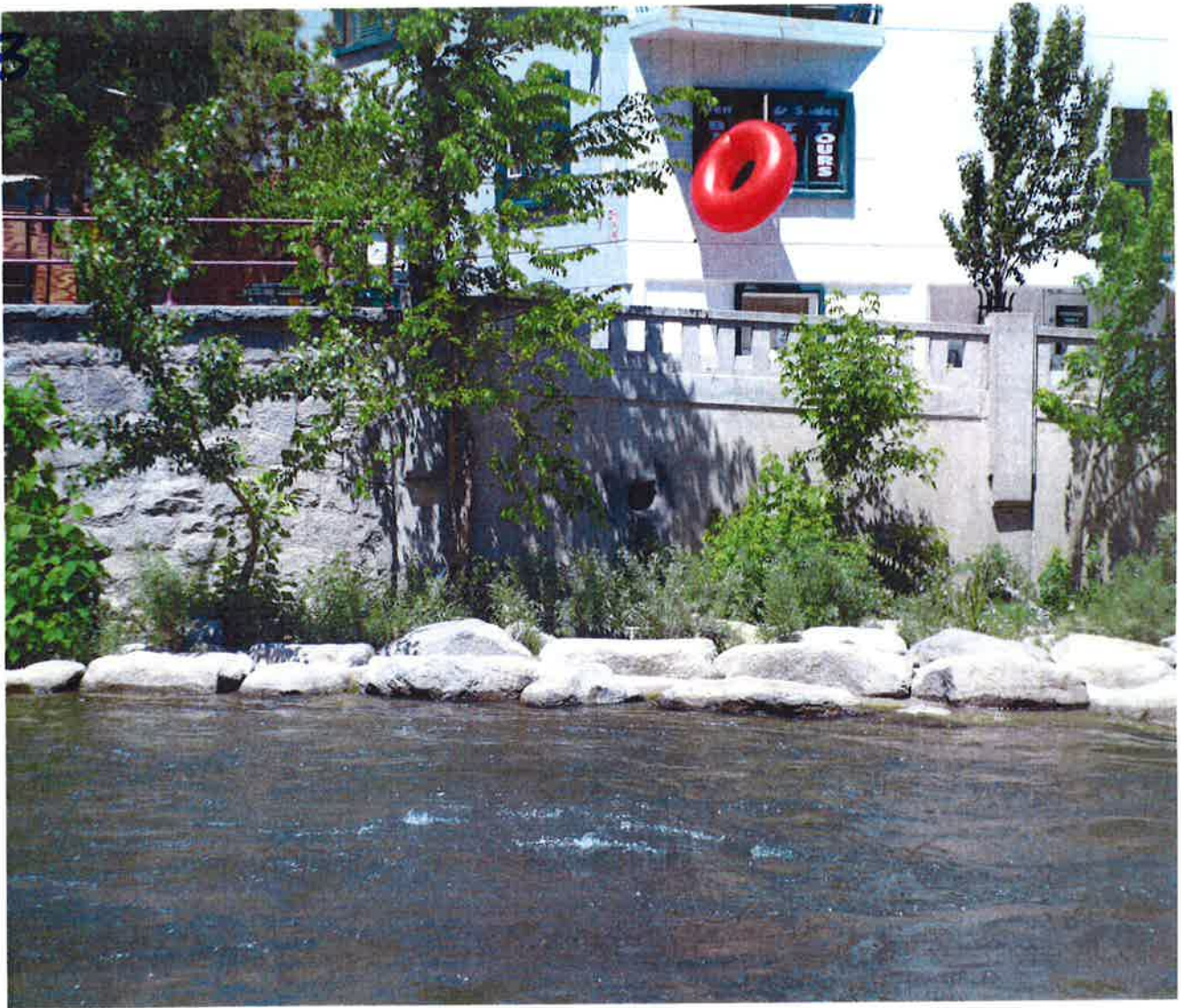


## Outfall # F19



**SIZE**        **8"**  
**FLOW**        **N**  
**DATE**        **8/12/2002**  
**BANK**        **N**  
**OPEN**  
**PHOTO#**     **279**  
**FLAPPER**

F19B



## Outfall # G19



**SIZE** 8"  
**FLOW** N  
**DATE** 8/12/2002  
**BANK** N  
**OPEN**  
**PHOTO#** 281  
**FLAPPER** Y

# Outfall # G19B



**SIZE**        **12"**  
**FLOW**        **N**  
**DATE**        **8/12/2002**  
**BANK**        **N**  
**OPEN**  
**PHOTO#**     **282**  
**FLAPPER**    **Y**

City of Reno  
TRUCKEE RIVER OUTFLOWS  
McCarran West to McCarran East

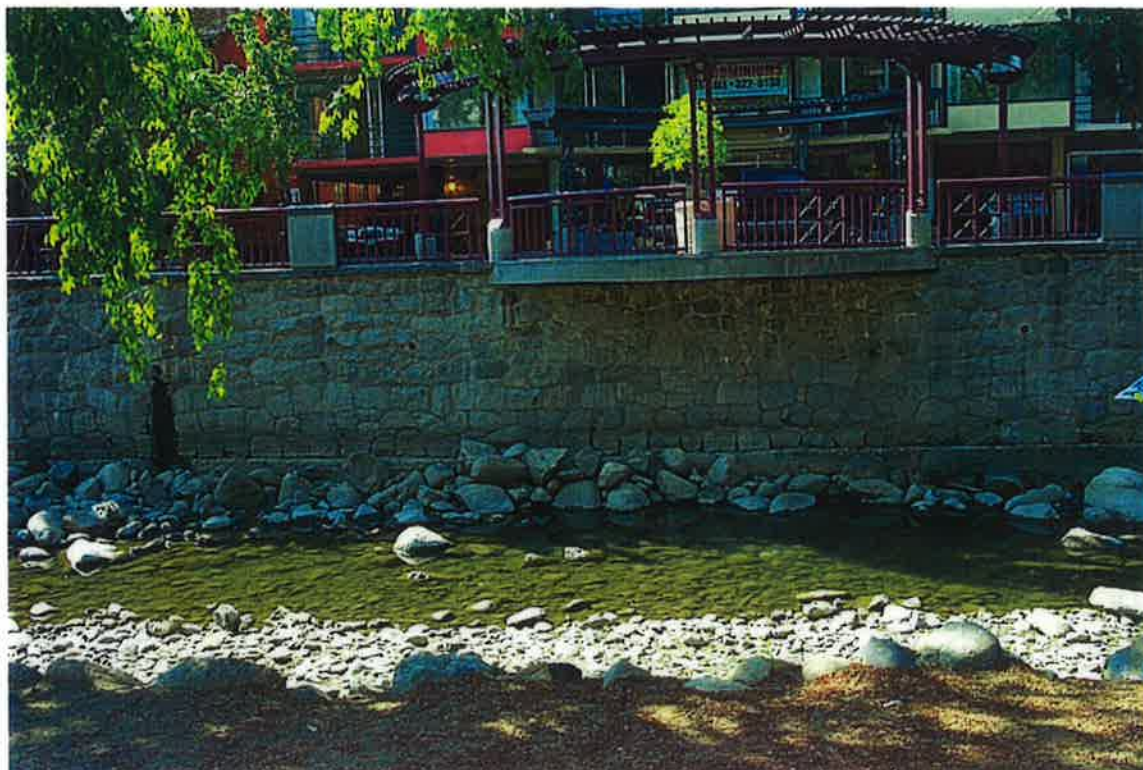


## Outfall # H19



**SIZE**        **36"**  
**FLOW**        **Y**  
**DATE**        **8/12/2002**  
**BANK**        **S**  
**OPEN**  
**PHOTO#**     **283**  
**FLAPPER**

## Outfall # I19



**SIZE**            **6"**  
**FLOW**           **N**  
**DATE**            **8/12/2002**  
**BANK**            **S**  
**OPEN**  
**PHOTO#**        **286**  
**FLAPPER**

City of Reno  
TRUCKEE RIVER OUTFLOWS  
McCarran West to McCarran East



## Outfall # J19



**SIZE** 8"  
**FLOW** N  
**DATE** 8/12/2002  
**BANK** S  
**OPEN** No  
**PHOTO#** 288  
**FLAPPER**

## Outfall # K19



**SIZE**        **6"**  
**FLOW**        **Y**  
**DATE**        **8/12/2002**  
**BANK**        **N**  
**OPEN**  
**PHOTO#**     **289**  
**FLAPPER**

City of Reno  
TRUCKEE RIVER OUTFLOWS  
McCarran West to McCarran East



## Outfall # K19B



**SIZE**            **12"**

**FLOW**           **N**

**DATE**            **8/12/2002**

**BANK**            **N**

**OPEN**

**PHOTO#**        **290**

**FLAPPER**

City of Reno  
TRUCKEE RIVER OUTFLOWS  
McCarran West to McCarran East



## Outfall # K19C



**SIZE**            **12"**

**FLOW**           **N**

**DATE**            **8/12/2002**

**BANK**            **N**

**OPEN**

**PHOTO#**        **290**

**FLAPPER**

City of Reno  
TRUCKEE RIVER OUTFLOWS  
McCarran West to McCarran East



## Outfall # L19



**SIZE** 8"  
**FLOW** N  
**DATE** 8/12/2002  
**BANK** S  
**OPEN**  
**PHOTO#** 292  
**FLAPPER**

## Outfall # M19



SIZE 8"  
FLOW N  
DATE 8/12/2002  
BANK N  
OPEN  
PHOTO# 293  
FLAPPER

City of Reno  
TRUCKEE RIVER OUTFLOWS  
McCarran West to McCarran East



## Outfall # N19



**SIZE**        **12"**  
**FLOW**        **N**  
**DATE**        **8/12/2002**  
**BANK**        **S**  
**OPEN**  
**PHOTO#**     **295**  
**FLAPPER**

City of Reno  
TRUCKEE RIVER OUTFLOWS  
McCarran West to McCarran East



## Outfall # O19



**SIZE**            **18"**

**FLOW**           **N**

**DATE**           **8/12/2002**

**BANK**           **N**

**OPEN**

**PHOTO#**       **297**

**FLAPPER**

City of Reno  
TRUCKEE RIVER OUTFLOWS  
McCarran West to McCarran East



## Outfall # P19



**SIZE** 24"  
**FLOW** N  
**DATE** 8/12/2002  
**BANK** N  
**OPEN**  
**PHOTO#** 298  
**FLAPPER** Y

City of Reno  
TRUCKEE RIVER OUTFLOWS  
McCarran West to McCarran East



## Outfall # Q19



**SIZE**      **Misc**

**FLOW**     **N**

**DATE**     **8/12/2002**

**BANK**     **N**

**OPEN**

**PHOTO#**   **302**

**FLAPPER**

City of Reno  
TRUCKEE RIVER OUTFLOWS  
McCarran West to McCarran East



## Outfall # R19



SIZE        **12"**  
FLOW        **N**  
DATE        **8/12/2002**  
BANK        **N**  
OPEN  
PHOTO#     **303**  
FLAPPER

TRUCKEE RIVER City of Reno  
McCarran West to McCarran East



## Outfall # S19



**SIZE** Misc  
**FLOW** N  
**DATE** 8/12/2002  
**BANK** N  
**OPEN**  
**PHOTO#** 304  
**FLAPPER**

City of Reno  
TRUCKEE RIVER OUTFLOWS  
McCarran West to McCarran East



# Outfall # T19



SIZE 36"

FLOW N

DATE 8/12/2002

BANK N

OPEN

PHOTO# 305

FLAPPER

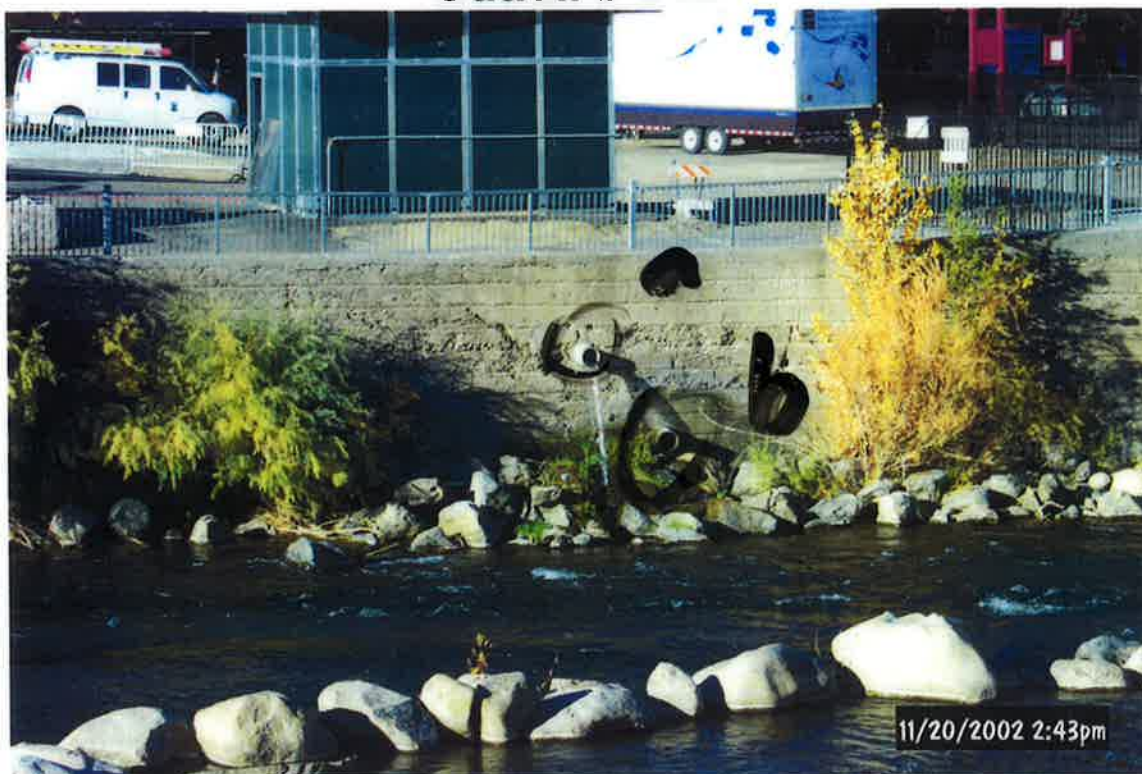
*Scrap.*

## Outfall # U19



**SIZE** 8"  
**FLOW** N  
**DATE** 8/12/2002  
**BANK** S  
**OPEN**  
**PHOTO#** 306  
**FLAPPER**

# Outfall # V19



SIZE 8"

FLOW Y

DATE 8/12/2002

BANK N

OPEN

*0.5 dup*

PHOTO# 500

FLAPPER

City of Reno  
TRUCKEE RIVER OUTFLOWS  
McCarran West to McCarran East



## Outfall # W19



**SIZE**        **24"**

**FLOW**        **N**

**DATE**        **8/12/2002**

**BANK**        **N**

**OPEN**

**PHOTO#**     **307**

**FLAPPER**    **Y**

City of Reno  
TRUCKEE RIVER OUTFLOWS  
McCarran West to McCarran East



## Outfall # X19



**SIZE**           **6"**  
**FLOW.**         **N**  
**DATE**         **8/12/2002**  
**BANK**         **S**  
**OPEN**  
**PHOTO#**      **308**  
**FLAPPER**

## Outfall # Y19



**SIZE** 18"  
**FLOW** Y  
**DATE** 8/12/2002  
**BANK** N  
**OPEN**  
**PHOTO#** 101  
**FLAPPER**

City of Reno  
TRUCKEE RIVER OUTFLOWS  
McCarran West to McCarran East



# Outfall # Z19A



**SIZE**        **24**  
**FLOW**       **?**  
**DATE**        **8/8/2002**  
**BANK**        **S**  
**OPEN**  
**PHOTO#**    **501**  
**FLAPPER**

City of Reno  
TRUCKEE RIVER OUTFLOWS  
McCarran West to McCarran East





10

Y19

A18

Z19A

X19

W19

V19

T19

S19

R19

Q19

P19

O19

M19

K19C

K19B

G19B

F19

E19

D19

A19

B19B

B19C

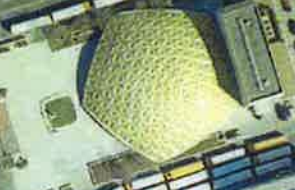
H19

I19

J19

L19

N19



L20

K20

M20

## Outfall # A20



**SIZE**        **18"**  
**FLOW**        **N**  
**DATE**        **8/19/2002**  
**BANK**        **S**  
**OPEN**  
**PHOTO#**     **415**  
**FLAPPER**

City of Reno  
TRUCKEE RIVER OUTFLOWS  
McCarran West to McCarran East



## Outfall # B20



**SIZE**        **12"**  
**FLOW**        **N**  
**DATE**        **8/19/2002**  
**BANK**        **N**  
**OPEN**  
**PHOTO#**     **417**  
**FLAPPER**

## Outfall # C20



**SIZE**            **24"**  
**FLOW**           **N**  
**DATE**            **8/19/2002**  
**BANK**            **N**  
**OPEN**  
**PHOTO#**        **418**  
**FLAPPER**

City of Reno  
TRUCKEE RIVER OUTFLOWS  
McCarran West to McCarran East



# Outfall # D20



**SIZE**        **10"**  
**FLOW**        **N**  
**DATE**        **8/19/2002**  
**BANK**        **N**  
**OPEN**  
**PHOTO#**     **503**  
**FLAPPER**

City of Reno  
TRUCKEE RIVER OUTFLOWS  
McCarran West to McCarran East



## Outfall # E20



**SIZE**        **24"**  
**FLOW**        **N**  
**DATE**        **8/19/2002**  
**BANK**        **N**  
**OPEN**  
**PHOTO#**     **422**  
**FLAPPER**

City of Reno  
TRUCKEE RIVER OUTFLOWS  
McCarran West to McCarran East



## Outfall # F20



**SIZE**        **30"**  
**FLOW**        **N**  
**DATE**        **8/19/2002**  
**BANK**        **N**  
**OPEN**  
**PHOTO#**     **420**  
**FLAPPER**

# Outfall # G20



**SIZE** 15"  
**FLOW** N  
**DATE** 8/19/2002  
**BANK** N  
**OPEN**  
**PHOTO#** 423  
**FLAPPER**



City of Reno  
TRUCKEE RIVER OUTFLOWS  
McCarran West to McCarran East



## Outfall # H20



**SIZE**        **15"**  
**FLOW**        **N**  
**DATE**        **8/19/2002**  
**BANK**        **N**  
**OPEN**  
**PHOTO#**    **425**  
**FLAPPER**

City of Reno  
TRUCKEE RIVER OUTFLOWS  
McCarran West to McCarran East



# Outfall # I20



**SIZE**        **24"**  
**FLOW**        **N**  
**DATE**        **8/19/2002**  
**BANK**        **N**  
**OPEN**  
**PHOTO#**     **502**  
**FLAPPER**

City of Reno  
TRUCKEE RIVER OUTFLOWS  
McCarran West to McCarran East



## Outfall # J20



**SIZE**        **24"**  
**FLOW**        **N**  
**DATE**        **8/19/2002**  
**BANK**        **N**  
**OPEN**        **N**  
**PHOTO#**     **426**  
**FLAPPER**

## Outfall # K20



**SIZE**

**FLOW**      **Y**

**DATE**        **8/19/2002**

**BANK**        **N**

**OPEN**

**PHOTO#**    **429**

**FLAPPER**

City of Reno  
TRUCKEE RIVER OUTFLOWS  
McCarran West to McCarran East



## Outfall # L20



**SIZE**        **18"**  
**FLOW**        **N**  
**DATE**        **8/19/2002**  
**BANK**        **N**  
**OPEN**  
**PHOTO#**     **431**  
**FLAPPER**

# Outfall # M20



**SIZE**        **12"**  
**FLOW**       **N**  
**DATE**        **11/20/2002**  
**BANK**        **S**  
**OPEN**        **Y**  
**PHOTO#**     **504**  
**FLAPPER**

City of Reno  
TRUCKEE RIVER OUTFLOWS  
McCarran West to McCarran East



20

9/17/20

Kelstone Ave

A20  
B21  
C21

B20

C20

D20

E20  
F20

G20

H20

I20  
J20

K20

M20

L20

A19



# Outfall # A21



**SIZE** ?  
**FLOW** N  
**DATE** 8/19/2002  
**BANK** N  
**OPEN** ?  
**PHOTO#** 409  
**FLAPPER**



## Outfall # B21



**SIZE** 48"X96"  
**FLOW** N  
**DATE** 8/19/2002  
**BANK** S  
**OPEN**  
**PHOTO#** 410  
**FLAPPER**

# Outfall # C21



**SIZE** 12"  
**FLOW** N  
**DATE** 8/19/2002  
**BANK** S  
**OPEN**  
**PHOTO#** 411  
**FLAPPER**



City of Reno  
TRUCKEE RIVER OUTFLOWS  
McCarran West to McCarran East

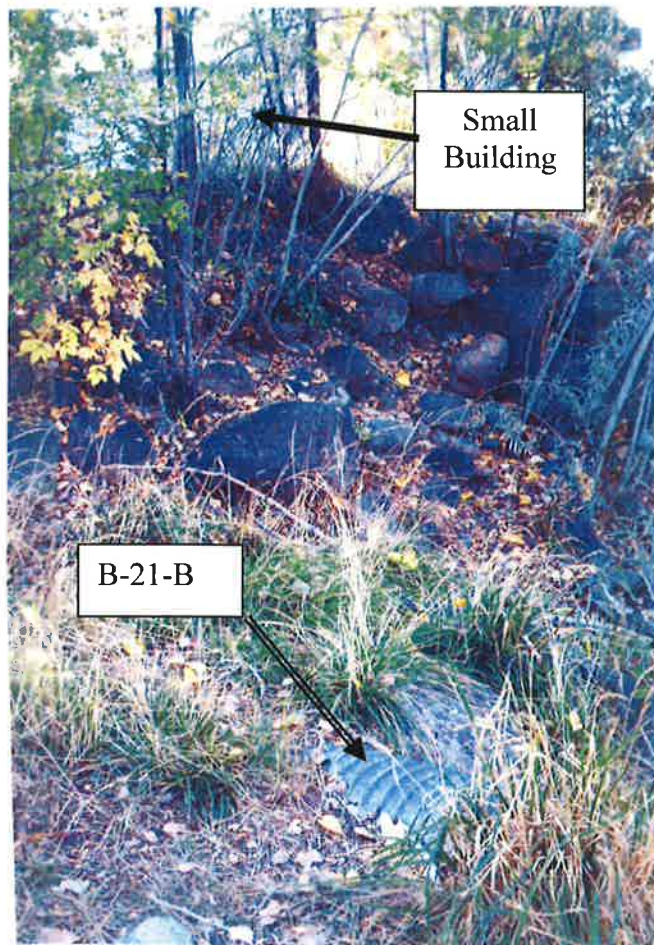


## Outfall # D21



**SIZE** 60"  
**FLOW** N  
**DATE** 8/19/2002  
**BANK** S  
**OPEN**  
**PHOTO#** 412  
**FLAPPER**





21

A21

B-21-B

B21

D21

C21

A20

B20

C20

D20

E20

